



• 27 June 2019 • TERM 2 • WEEK 9

## Pekerau Primary School

742 Te Rahu Road

Te Awamutu

07 871 6025

**021 0872 3570 - text absent messages**

office@pekerau.school.nz

www.pekerau.school.nz

Do you want to buy this space to advertise your business?

Email or phone the office for more information

**07 871 6025**

**office@pekerau.school.nz**

Kia Ora Whanau and Parents,

Our new report format went home last week. We want to make it as easy as possible for you to see how your child is tracking at school. We've had some feedback that we will take on board when we report to you again at the end of the year to improve transparency.

The changes we will make include:

- Correcting the address printed on some of the reports.
- Changing the **Green Line** wording from 'beginning of the year achievement' To 'mid year achievement'. This will reflect that we are referring to the latest assessments we do in term 2.
- **Red Line** placement. Some classes put the red line where your child should be at the end of their year level, some put the red line where your child should be mid year. Everyone will put the red line in the same place to ease confusion, particularly for those with children in different syndicates.
- Greater explanation around the curriculum levels and where each year level should be achieving.

If there is other feedback about the report you think would help us improve the format, please email [principal@pekerau.school.nz](mailto:principal@pekerau.school.nz) or talk to your child's teacher.

Tania Heke  
Principal

LET ME KNOW



## Upcoming Dates:

- **27th June** - Parent/Teacher interviews
- **1st July** - Matariki Showcase 9.30am
- **2nd July** - Matariki showcase 6pm
- **5th July** - End of Term 2
- **22nd July** - Term 3 begins
- **22 July** - Vision & Hearing checks

We are Pekerau STARS!



**MANGA ROACH**  
CONTRACTING



**MANGA ROACH**  
CONTRACTING

Manga Roach Owner/Operator  
Phone: 027 431 9959  
Email: mangaroachcontracting@gmail.com

Over 30 years experience operating diggers.  
1.8 tonne small digger for tight spaces

Driveways and pathways  
Section Clearing  
Small Tree Removal  
Calf Pen Cleanout  
Small drain clearing  
Water Services



# WILKSPENNY

MOTORCYCLES

ILANA WILKS  
DIRECTOR  
0275 445 262

MARK PENNY  
DIRECTOR  
0274 310 880

2 Kihikahi Road Te Awamutu 3800 P 07 871 3069  
E info@wilkspenny.co.nz WWW.WILKSPENNY.CO.NZ



# coffee

Come and start your day with a cup of Pekerau goodness from everyone's favourite coffee barista, 8am -9am daily in our staffroom.



BYO cup or buy one of our posh keep cups and get your first coffee free! \$12.00



Do you want to buy this space to advertise your business?

Email or phone the office for more information

07 871 6025  
office@pekerau.school.nz

Do you want to buy this space to advertise your business?

Email or phone the office for more information

07 871 6025  
office@pekerau.school.nz

### UNIFORM FOR SALE

Don't forget we have our older style shorts, skorts and long pants half price.

- Skort – \$19
- Shorts – \$19
- Long pants – \$20

**Stock is running low!!!**

### We need bread tags

The lovely lady who provides our emergency school lunches is collecting bread tags for a fundraising project.

Please bring your collected bread tags to the office.



### Next Term



We will no longer be selling cookies at the office or ordering Pita pit on a Friday.

### Childcare

Our lovely teacher aide Linda Rumbles would like to offer her services for childcare during the holidays. Please phone Linda 027 410 9917 if you are interested

**Pekerau Primary School**  
**Showcase**

**Matinee July 1<sup>st</sup> at 9:30am**

**Adults \$5.00 Children 12 and  
under \$2.00**

**Tickets available from the office  
LIMITED SPACES AVAILABLE**

**6pm Showcase sold out!!!**

**Doors open 5.45pm**

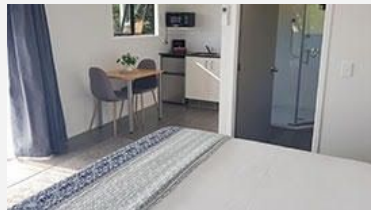


# FUNDRAISING RAFFLE

The fundraising team has been working super hard behind the scenes to create an EPIC raffle and we need you and your whanau to help us sell the tickets!

Please call into the office to grab your sheet of tickets! Limited tickets - great prizes!!

**1st prize** - 1 Nights accommodation in Coromandel at Tide Water Motel and Tourist Park, \$100 petrol voucher and \$50 food voucher.



**2nd prize** - Meal at Vilagrads Winery for 2 adults and 2 children.



**3rd prize** - Family pass to the Otorohanga Kiwi House



## **GUESS WHAT?!**

The Milestone Foundation have given Pekaerau \$20,000 to buy goodies for our school!

You can look forward to our children enjoying new books in our library!  
We're getting the court lines spruced up and games painted on the concrete areas for the children to play with their friends.

We've also been given a substantial amount towards our Year 5 and 6 camp and we're getting a new heat pump to keep us warm in winter and cool in summer.



# Join the Movement!



**5.30 – 7PM  
THURSDAY 4TH  
JULY, 2019**

**Albert Park Indoor Centre,  
420 Albert Park Drive,  
Te Awamutu**


[WWW.THISISME.ORG.NZ](http://WWW.THISISME.ORG.NZ)

Find out what physical activity opportunities are happening for women and girls in your community!


- Meet like-minded people
- Find out what's on offer in Te Awamutu
- Tell us what you'd like to see available

**WIN!** Collect your **Passport** to try some of the free options in July! **Prizes to be won!**

 [thisisme\\_nz](https://www.instagram.com/thisisme_nz)
 [fb.com/thisisMENZ](https://www.facebook.com/thisisMENZ)

[www.squiggle.org.nz](http://www.squiggle.org.nz)



**Involves:**

- Fun Learning
- Problem Solving
- Collaboration
- Individual Toolkits
- Motorized Lego Models
- Experiments

**Bricks Challenge:**  
Ages 6 – 10  
After-School Classes and In-school classes available

**Gali –Lego/Advanced:**  
Ages 11 - 13

**Also available at our Squiggle Holiday Programme**  
[www.squiggle.org.nz](http://www.squiggle.org.nz)

**CONTACT:**  
Katrina Mead  
M: 027 909 3903  
E: [katrina@squiggle.org.nz](mailto:katrina@squiggle.org.nz)

e2 Young Engineers – Bricks Challenge and Gali-Leo are exciting programmes that will boost a student's mind in creative thinking and problem solving. Students will explore basic principles of Science, Technology, Engineering and Maths and get hands-on practical experience building motorised Lego models. It's fun, it's challenging, and it'll help prepare them for other educational pathways in science, physics or engineering!

## THE SAFE & HAPPY CLUB HOLIDAY PROGRAMME



The July holidays are almost here and once again we are offering a fun filled programme, running from Pekaeru Primary School.

We have loads planned including trips to Laser Tag, Leap, Extreme Edge, Roller Skating at Eastlink, cinemas & pools. Also, numerous interesting onsite days including a visit from Young Engineers.

If you would like a programme call Laille on 027 727 8521 or email [info@safeandhappyclub.co.nz](mailto:info@safeandhappyclub.co.nz)

**PLEASE NOTE - FOR THOSE THAT QUALIFY, WE HAVE THE WINZ SUBSIDY AVAILABLE.**